

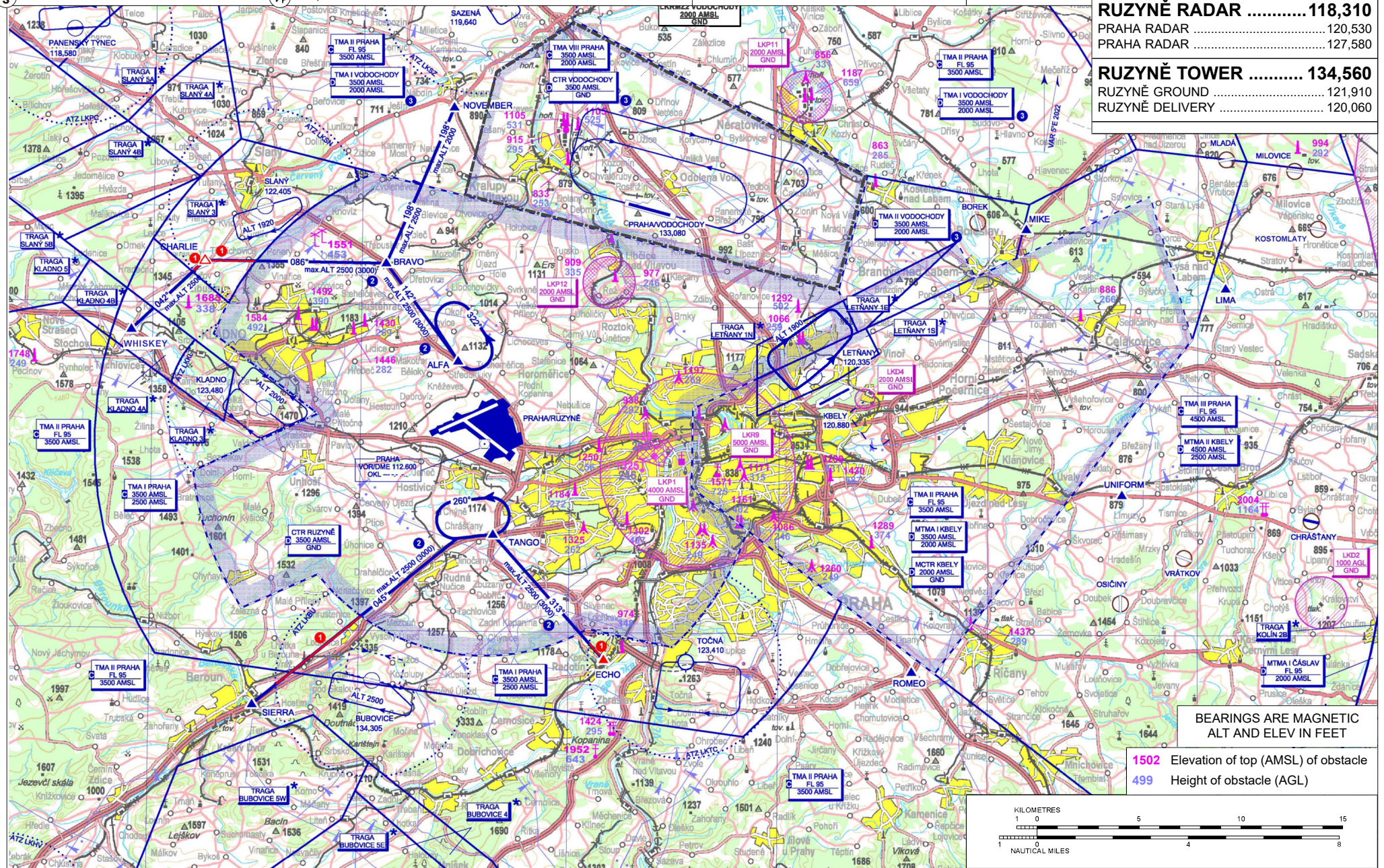
LKPR PRAHA/Ruzyně

ARP: 50° 06' 03" N, 14° 15' 36" E
277° GEO - 10 km Prague castle
ELEV: 1234 ft / 376 m



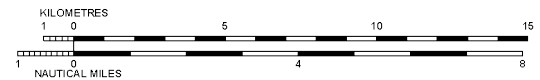
Public international aerodrome IFR, VFR

RUZYŇĚ ATIS	122,160
RUZYŇĚ RADAR	118,310
PRAHA RADAR	120,530
PRAHA RADAR	127,580
RUZYŇĚ TOWER	134,560
RUZYŇĚ GROUND	121,910
RUZYŇĚ DELIVERY	120,060



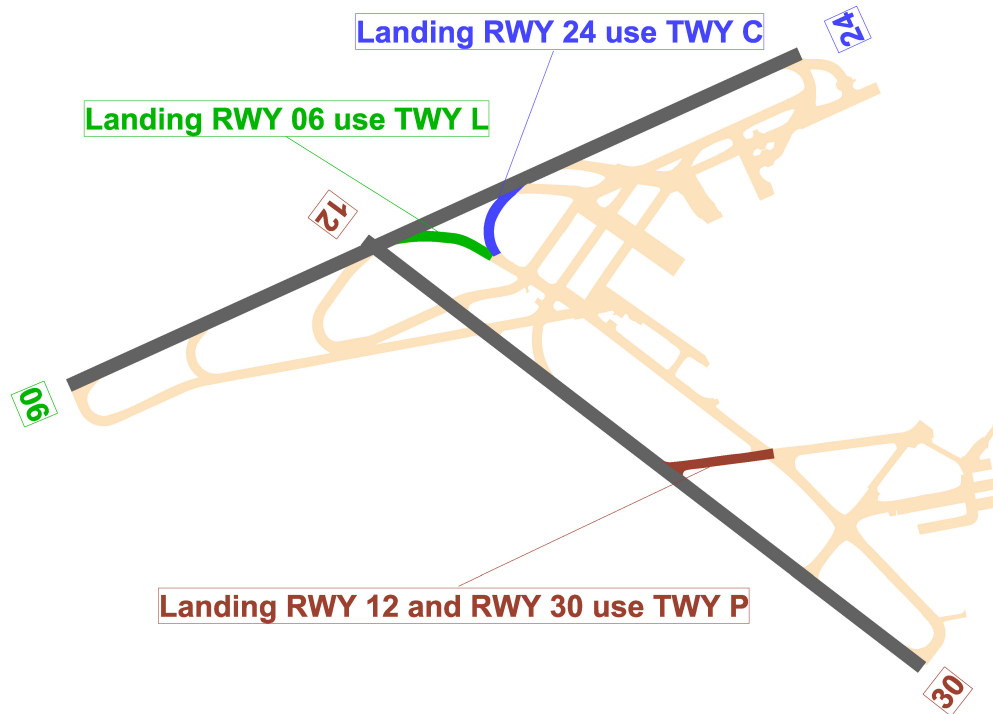
BEARINGS ARE MAGNETIC
ALT AND ELEV IN FEET

1502 Elevation of top (AMSL) of obstacle
499 Height of obstacle (AGL)



DESIGNATION	LOCATION	COORDINATES	
ECHO	Radotín (railway station)	49° 59' 10" N 014° 21' 41" E	Entry / exit
NOVEMBER	Velvary (silo)	50° 16' 06" N 014° 14' 21" E	Entry / exit
SIERRA	Beroun (motorway bridge)	49° 57' 42" N 014° 04' 58" E	Entry / exit
WHISKEY	Kačice (motorway flyover)	50° 09' 10" N 013° 58' 59" E	Entry / exit
ALFA	Petrol station	50° 08' 17" N 014° 14' 38" E	
BRAVO	Railway flyover	50° 11' 16" N 014° 11' 09" E	
CHARLIE	Castle	50° 11' 18" N 014° 02' 28" E	
TANGO	Motorway interchange	50° 02' 59" N 014° 16' 22" E	

ARRIVAL ROUTES	WAYPOINT SEQUENCE
NOVEMBER 2	NOVEMBER - BRAVO - ALFA
WHISKEY 2	WHISKEY - CHARLIE - BRAVO - ALFA
SIERRA 2	SIERRA - TANGO
ECHO 2	ECHO - TANGO
DEPARTURE ROUTES	WAYPOINT SEQUENCE
NOVEMBER 2	ALFA - BRAVO - NOVEMBER
WHISKEY 2	ALFA - BRAVO - CHARLIE - WHISKEY
SIERRA 2	TANGO - SIERRA
ECHO 2	TANGO - ECHO



3 Activation rules for CTR/TMA VODOCHODY and TMA VIII PRAHA

TMA VIII PRAHA is effective only if CTR and TMA II Vodochody is not active. Information about status of CTR and TMA II Vodochody is broadcasted on FREQ 123,030.

Outside of activation time TMA I Vodochody the area expires and the airspace classification is changed to class E. Information about status of TMA I Vodochody is broadcasted on FREQ 123,030.

LKPR PRAHA/Ruzyně



Ruzyně TOWER

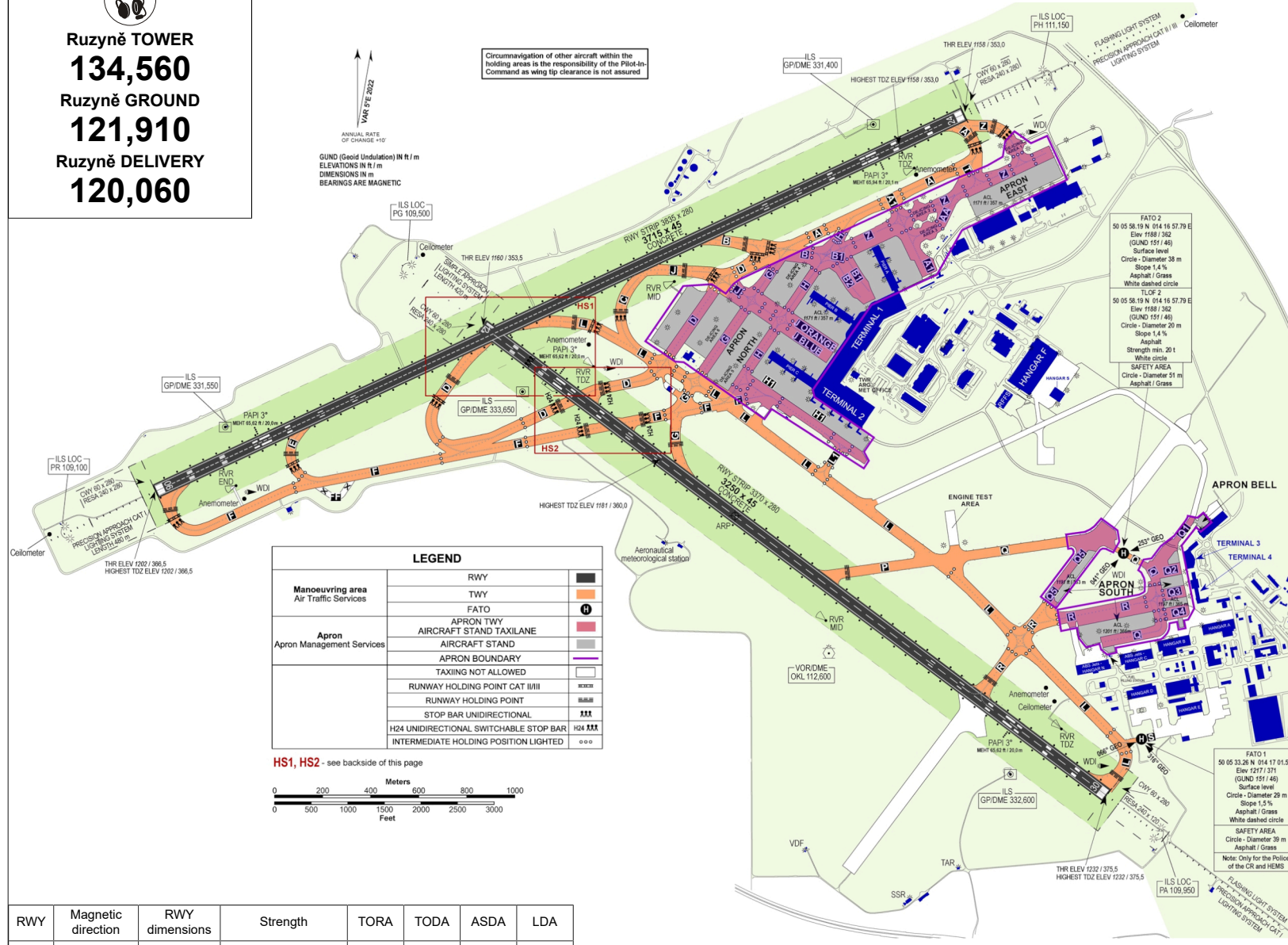
134,560

Ruzyně GROUND

121,910

Ruzyně DELIVERY

120,060



RWY	Magnetic direction	RWY dimensions	Strength	TORA	TODA	ASDA	LDA
06	060°	3715 x 45	PCN 75/R/B/W/T	3715	3775	3715	3715
24	240°	3715 x 45	PCN 75/R/B/W/T	3715	3775	3715	3715
12	122°	3250 x 45	PCN 62/R/B/X/T	3250	3310	3250	3250
30	302°	3250 x 45	PCN 62/R/B/X/T	3250	3310	3250	3250

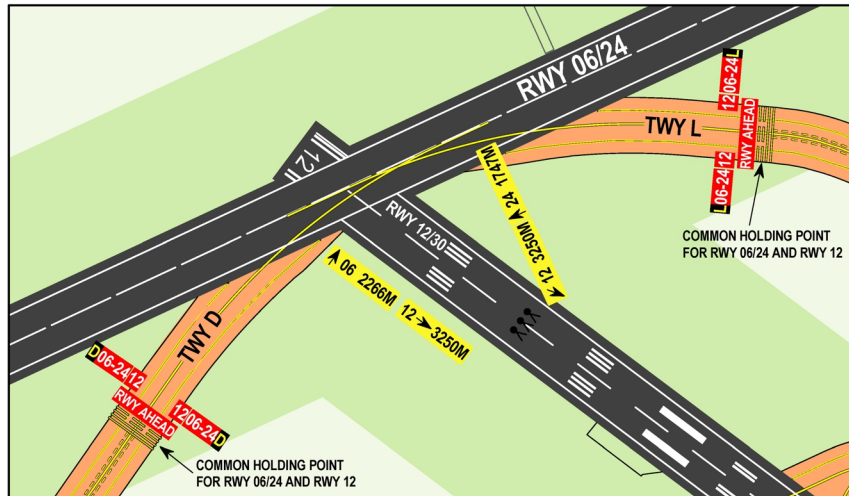
- Letiště Praha, a.s.**
K Letišti 6/1019, 160 08 Praha 6, Ruzyně, ☎ +420 220 111 111, ☎ +420 220 115 890, ☎ +420 235 350 922, ✉ LKPR@prg.aero, AFTN: LKPRYDYX
- H 24
- Turbo Fuel JET A-1, AVGAS 100 LL
- NIL
- O/R
- O/R
- Holiday Inn Prague Airport, Ramada Airport Hotel Prague, Courtyard by Marriott Prague Airport. Accommodation service of travel agencies in buildings of terminals 1, 2 and 3.
- Restaurant in buildings of terminal 1, 2 and 3.
- Rent a car, public transport, taxi including taxi minibuses, regular transport by bus and individual transport by car.

Customs and immigration clearance: H 24

After landing on RWY 06/24 vacation via RWY 12 is prohibited unless otherwise stated by ATC. There is prohibited taxiing of aircraft to RWY 12 along RWY 06/24 with exemption of the segment between TWY L and TWY D.

RWY 06/24 IN USE

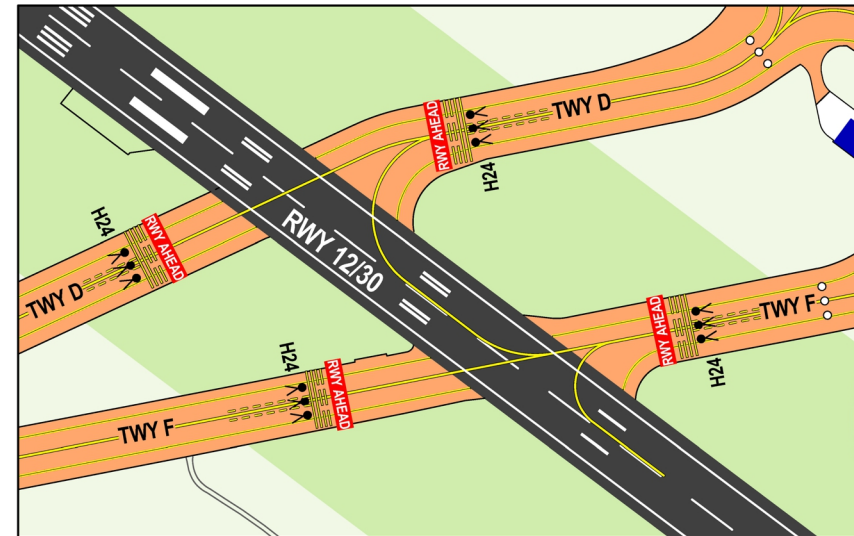
Possible misidentification of TWY D, RWY 12 AND TWY L.
 After landing on RWY 06/24 do not vacate via RWY 12 unless explicitly instructed by ATC to do so.



HS1

TWYs D and F cross the active RWY 12/30

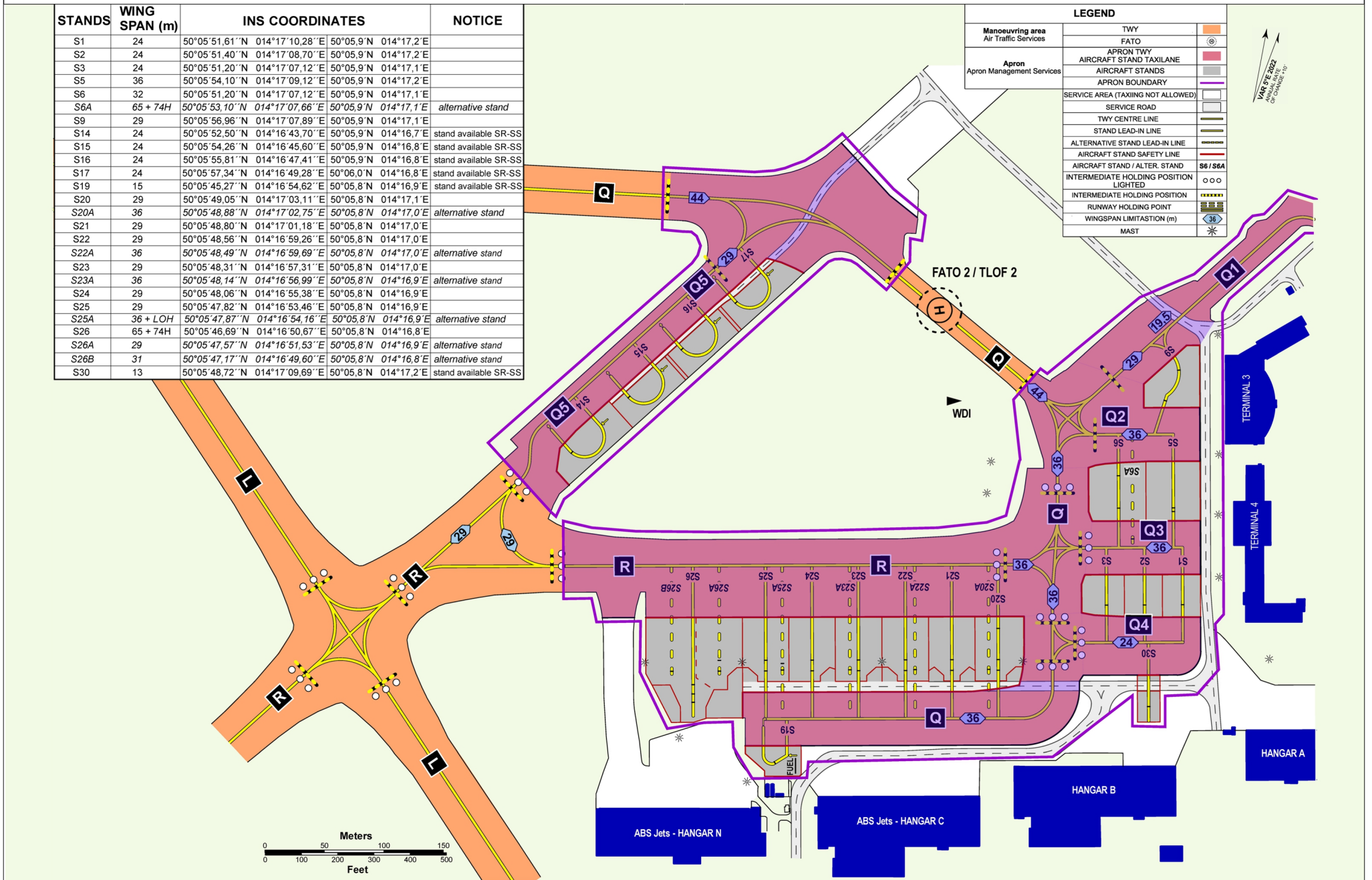
The Stop Bars on TWYs D and F are controlled automatically. Pilots must expect a short delay between the clearance to cross the active RWY and the consequent Stop Bar switch-off.



HS2

LKPR PRAHA/Ruzyně

Parking / Docking Chart - APRON SOUTH



Intentionally left blank