


LKCM Medláňky

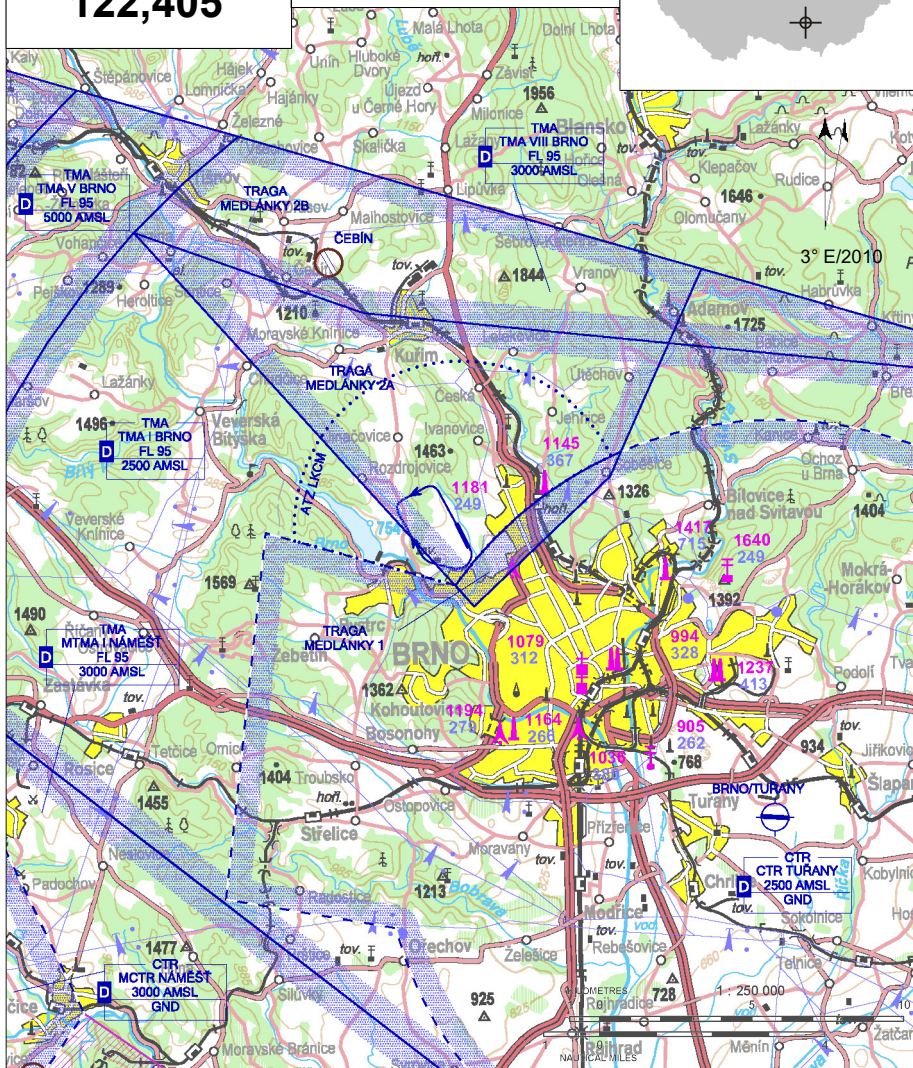
 Public domestic aerodrome

 VFR day



Medláňky RADIO
122,405

ARP: 49° 14' 13" N, 16° 33' 19" E
6,5 km NW central station Brno
ELEV: 925 ft / 282 m
Circuit: 2000 ft / 610 m AMSL



Flights are allowed from 0700 to 1800 UTC only due to reduction of noise in airport vicinity.

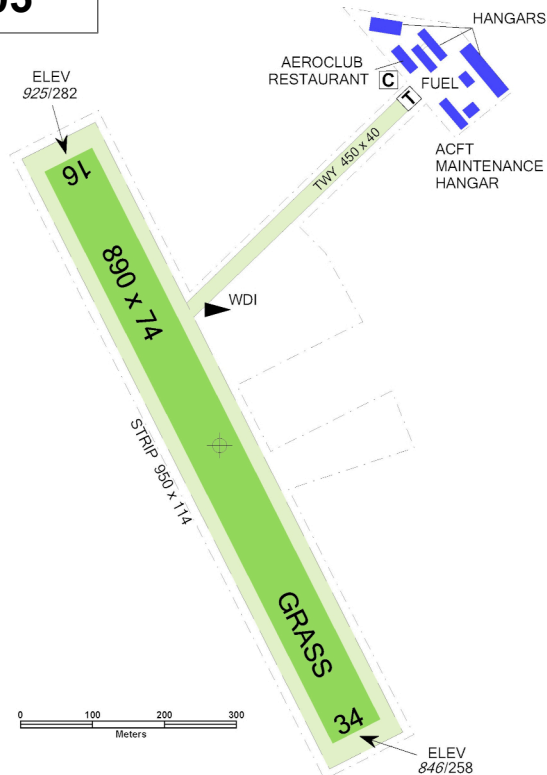
The area Mniší Hory (ZOO Brno) shall not be overflown in low altitude when flying along the circuit.

LKCM Medláňky



Medláňky RADIO
122,405

| RWY | Magnetic direction | RWY dimensions | Strength | TORA | TODA | ASDA | LDA |
|-----|--------------------|----------------|-------------------|------|------|------|-----|
| 16 | 155° | 890 x 74 | 5700 kg / 0,5 MPa | 890 | 920 | 890 | 890 |
| 34 | 335° | 890 x 74 | 5700 kg / 0,5 MPa | 890 | 920 | 890 | 890 |



15 APR - 15 OCT
SAT, SUN, HOL 0700-1400



BA 95 Natural



ELF 100 ADD



O/R, limited



NIL



O/R 8 beds



at the airport (Restaurace U Křivé Vrtule),
and another in Brno-Medláňky (1,5 km from
the aeroclub building)



bus No. 41, 65, N90 from the bus stop
Medláňky (1,5 km from the aeroclub
building)



Aeroklub Brno-Medláňky z.s.
Turistická 67, 621 00 Brno, vip@lkcm.cz

Jan Šponer (head of air traffic) ☎ +420 727 800 535
Medláňky RADIO unit (within operating hours)
☎ +420 541 227 222

Customs and immigration clearance: NIL

During an approach to RWY 16 the road in front of
THR RWY 16 shall be overflown at minimum height
15 m from lowest part of aircraft or tow rope.

