



# LKHV Hořovice

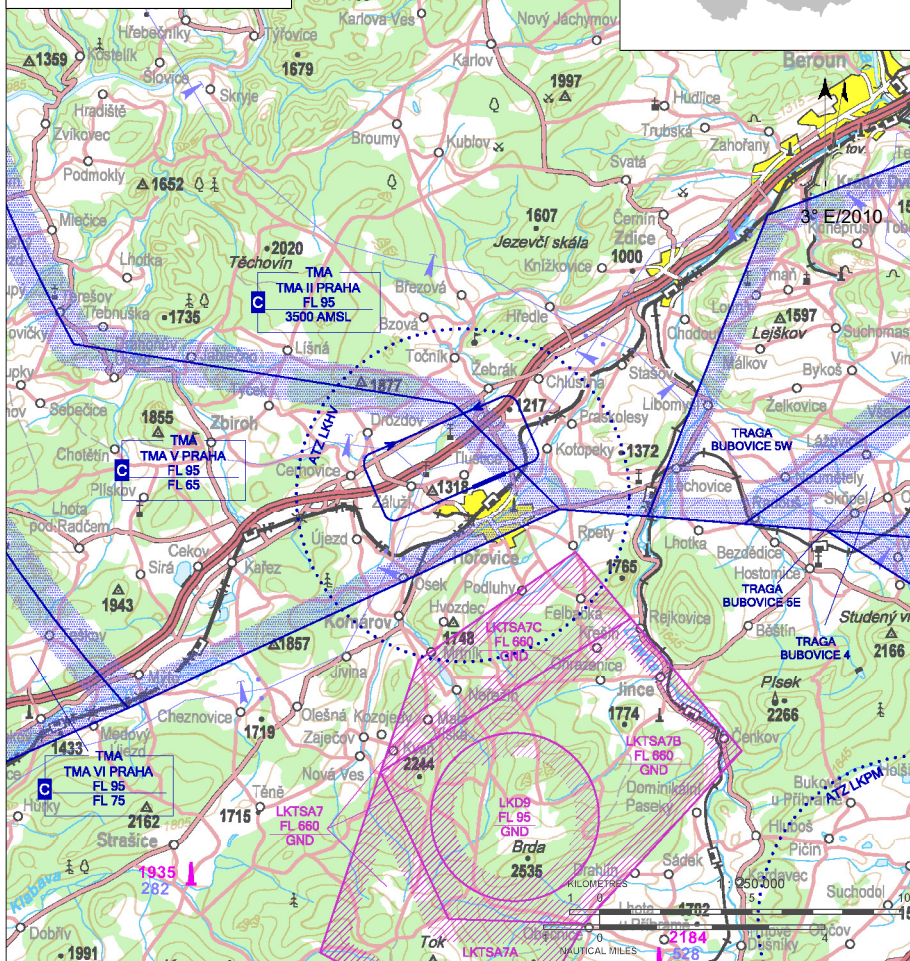
 Private domestic aerodrome

 VFR day, parachute jumping operation



**Hořovice RADIO**  
**135,580**

**ARP:** 49° 50' 41" N, 13° 53' 09" E  
1,5 km from city centre  
of Hořovice, GEO 360°  
**ELEV:** 1214 ft / 370 m  
**Circuit:** 2200 ft / 670 m AMSL



With the exception of having to ensure the safety of the flight, the pilots are required to strictly observe the pattern of the traffic circuit and avoid overflying adjacent villages (Záluží, Tlustice, Kotopeky, Chlustina, Hořovice).

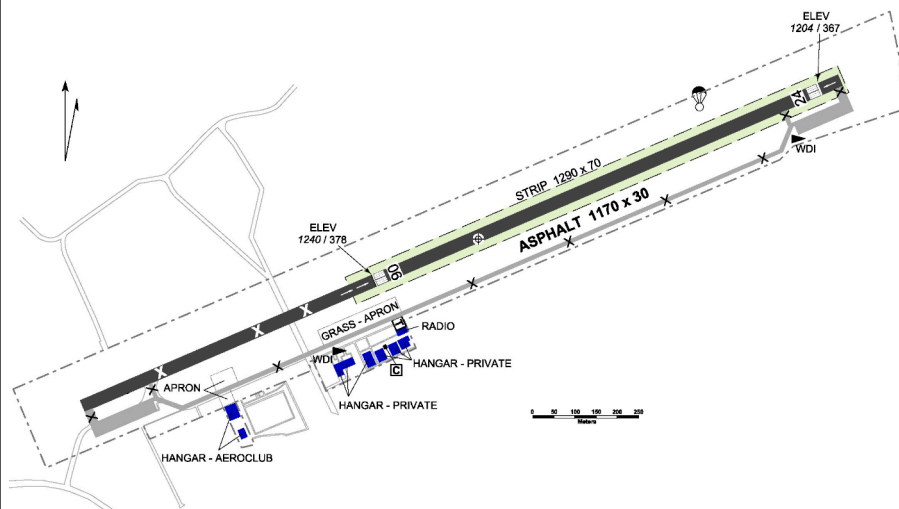
Southern part of the ATZ LKHV is bounded by LKTS7C. Pilots-in-command are required to verify the activation of this area in advance.

# LKHV Hořovice



**Hořovice RADIO**  
**135,580**

RWY	Magnetic direction	RWY dimensions	Strength	TORA	TODA	ASDA	LDA
06	063°	1170 x 30	PCN 25/R/B/Y/U	1170	1230	1170	1170
24	243°	1170 x 30	PCN 25/R/B/Y/U	1170	1230	1170	1170



## Aviatický klub Tlustice, z.s.

Tlustice č.p. 258, 268 01  
Hořovice, ☎ +420 606 730 374,  
info@aviatickyklubtlustice.cz, info@carto.cz,  
www.lkhv.eu

Ing. Jaroslav Kašpar, MBA (Head of Flight Operations)

☎ +420 603 238 888

Petr Sedláček (Deputy head of air traffic)

☎ +420 720 404 671

Martin Mára (Deputy head of Flight Operations)

☎ +420 724 807 083

Customs and immigration clearance: NIL

Threshold of RWY 06 is shifted beyond the Tlustice - Hořovice road. Threshold of RWY 24 is shifted as well.

Exercise caution when crossing the Tlustice - Hořovice road. Pay attention to passing vehicles.

🕒 O/R

🛢️ BA 95 Natural, aviation petrol - NIL

🗑️ NIL

🚗 O/R, limited

🔧 NIL

🏠 Guesthouse Ranch Hořovice 2,5 km;  
at the aerodrome - NIL

✂️ restaurant Tlustice, dist 1 km  
at the aerodrome - NIL

🚂 railway station ČD Hořovice, dist 1,2 km

