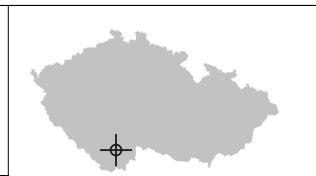


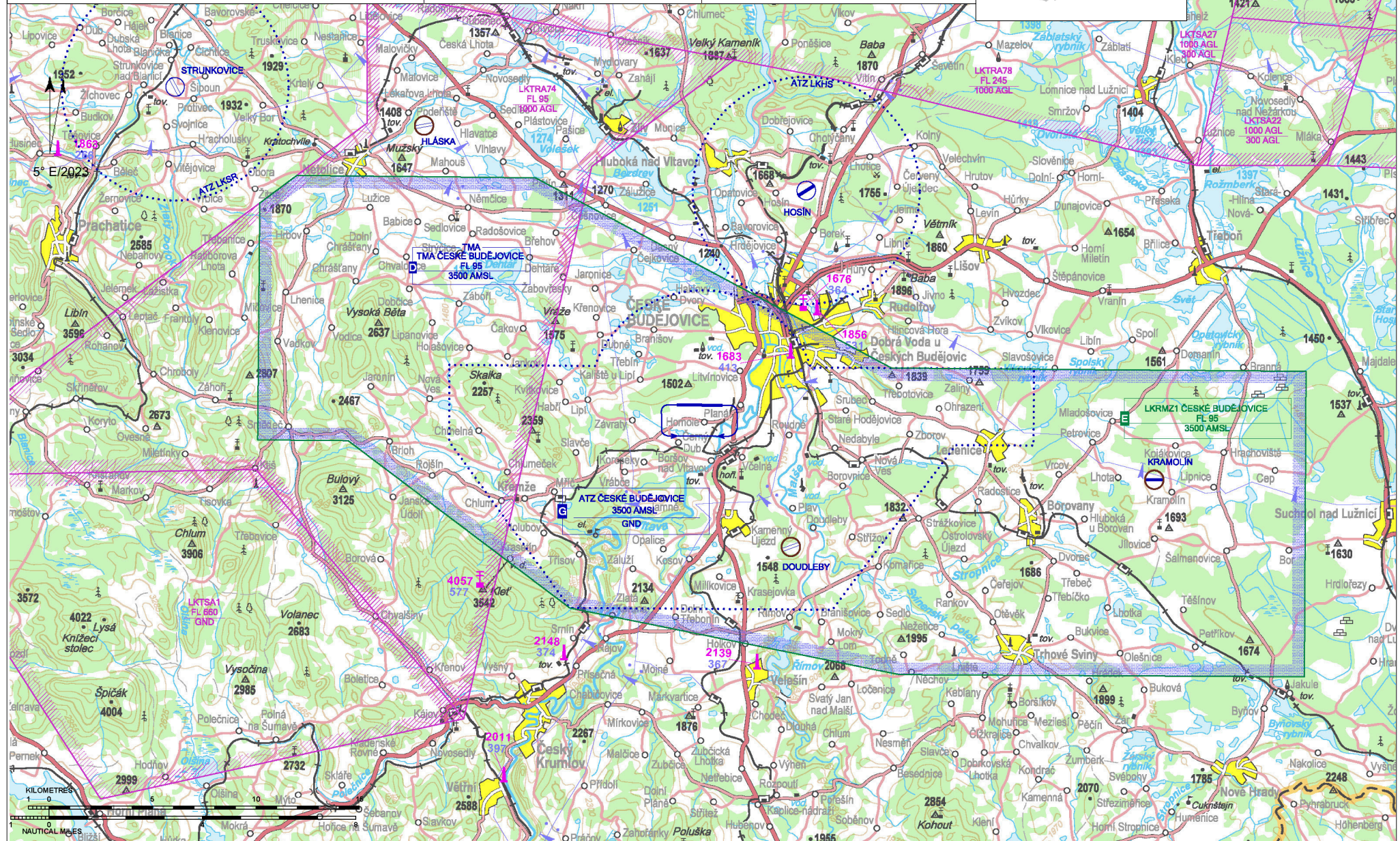
# LKCS České Budějovice

**ARP:** 48° 56' 47" N, 14° 25' 39" E  
 6.5 km SW from centre of town České Budějovice, west from river Vltava  
**ELEV:** 1417 ft / 432 m  
**Circuit:** 2400 ft / 730 m AMSL



**Budějovice INFORMATION**  
**135,930**

**S** Public domestic aerodrome / Private international aerodrome  
**X** VFR, IFR

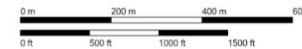
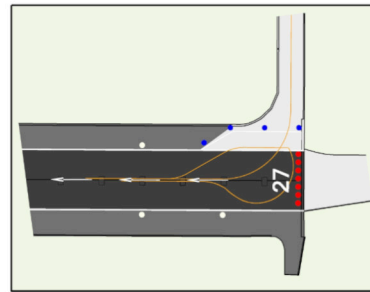
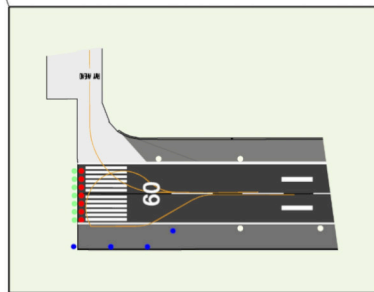
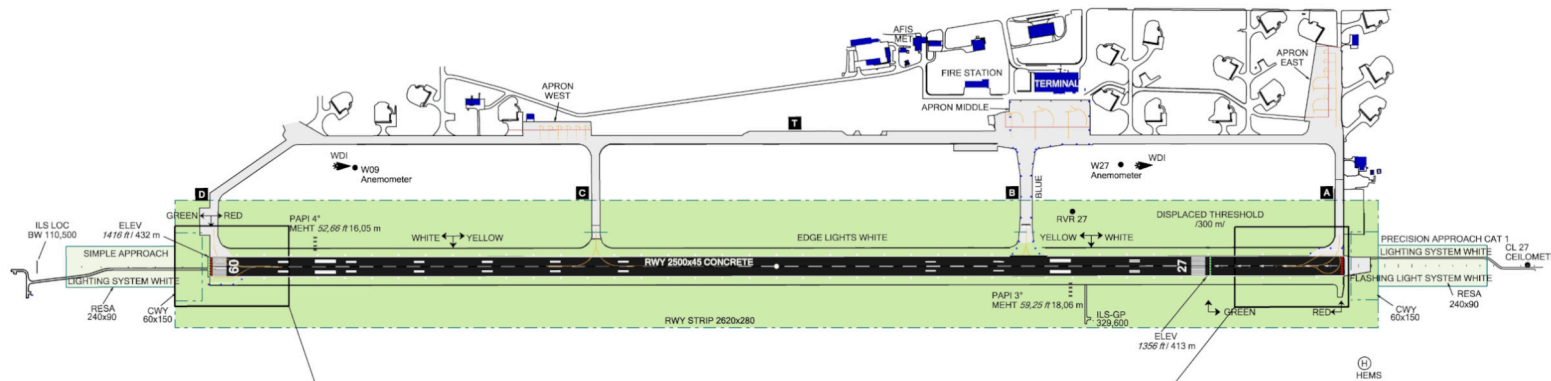
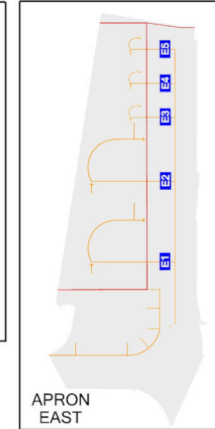
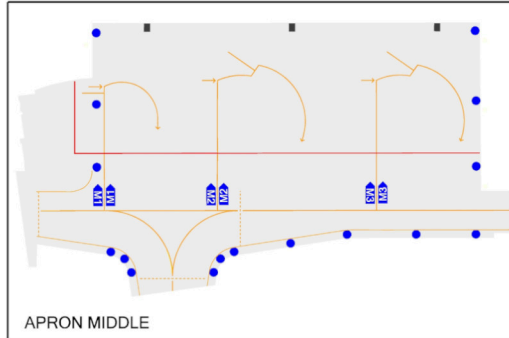
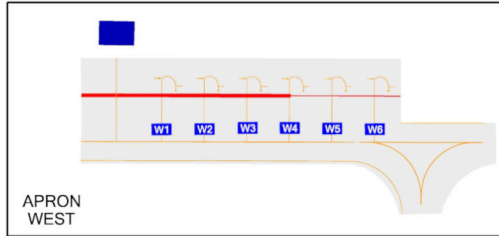


# LKCS České Budějovice



**Budějovice INFORMATION**  
**135,930**

↑  
VAR 5'E 2023  
ANNUAL RATE  
OF CHANGE +10"



RWY	Magnetic direction	RWY dimensions	Strength	TORA	TODA	ASDA	LDA
27	265°	2500 x 45	PCN 49/R/B/W/T	2500	2560	2500	2200
09	085°	2500 x 45	PCN 49/R/B/W/T	2500	2560	2500	2500



**JIHOČESKÉ LETIŠTĚ ČESKÉ BUDĚJOVICE a.s.**  
U Zimního stadionu 1952/2,  
370 01 ČESKÉ BUDĚJOVICE 7,  
☎ +420 387 204 550,  
☎ +420 387 201 014,  
✉ [airport@airport-cb.cz](mailto:airport@airport-cb.cz),  
[www.airport-cb.cz](http://www.airport-cb.cz)

AFIS unit - ☎ +420 725 036 721,  
☎ +420 386 325 339, [twr@airport-cb.cz](mailto:twr@airport-cb.cz),  
AFTN: LKCSZTZX  
Handling - ☎ +420 725 502 738,  
[handling@airport-cb.cz](mailto:handling@airport-cb.cz)  
Ing. Gustav Sysel - ☎ +420 702 121 528,  
[sysel@airport-cb.cz](mailto:sysel@airport-cb.cz)



MON-SUN 0700-1600 (0600-1500)  
Otherwise O/R 24 HR in advance.  
Operational hours extension of AD published by NOTAM.



AVGAS 100LL, JET-A1



NIL



limited



limited



hotels České Budějovice



villages Planá, Litvinovice, České Budějovice



public transport, line no. 19

Customs and immigration clearance: O/R  
24H in advance MON - FRI  
O/R 48H in advance SAT, SUN, HOL

THR RWY 27 permanently displaced 300 m  
to the west.