



# LKHV Hořovice

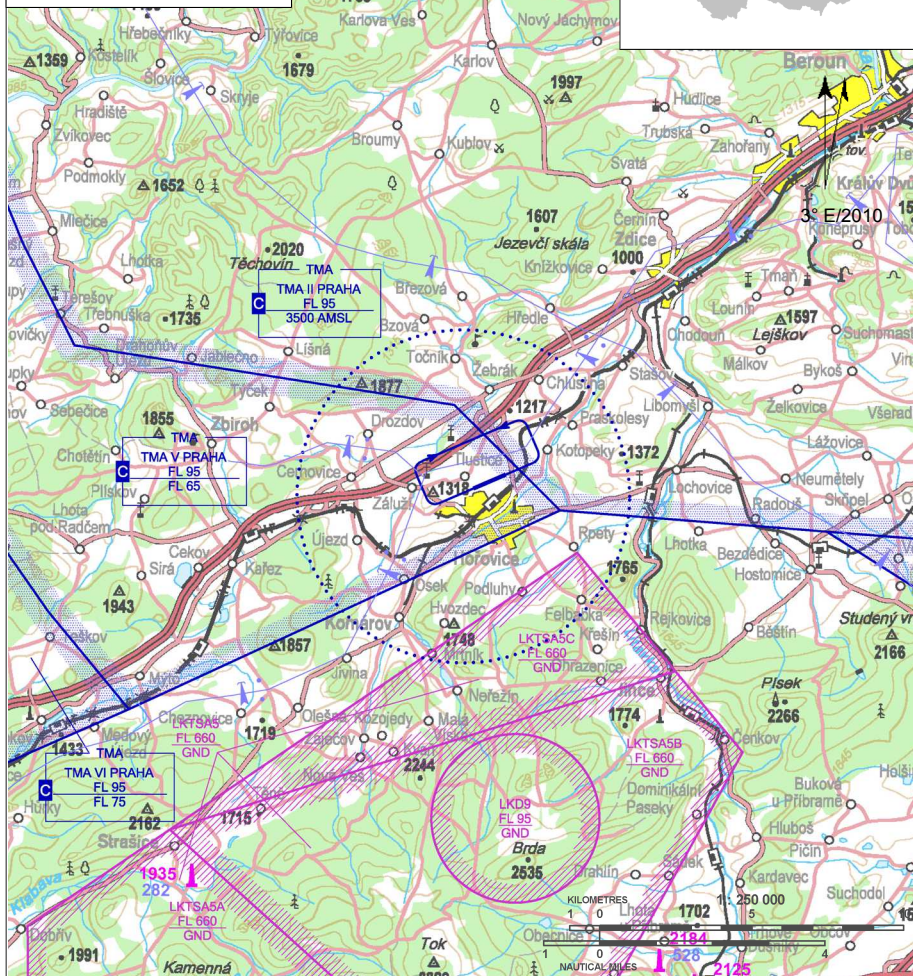
 Private domestic aerodrome

 VFR day, parachute jumping operation



**Hořovice RADIO**  
**135,580**

**ARP:** 49° 50' 41" N, 13° 53' 09" E  
1,5 km from city centre  
of Hořovice, GEO 360°  
**ELEV:** 1214 ft / 370 m  
**Circuit:** 2200 ft / 670 m AMSL



## Noise abatement

- The traffic circuits are to be carried out in order to avoid Tlustice village, downwind leg at the level of highway Praha-Plzeň (besides gliders and state of emergency).

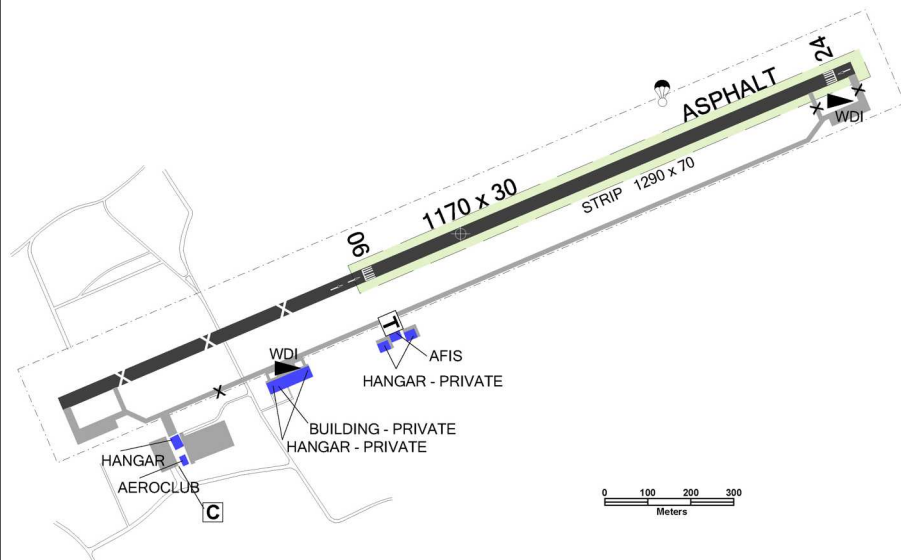
South part of ATZ LKHV is bounded by LKTS A5C.

# LKHV Hořovice



**Hořovice RADIO**  
**135,580**

RWY	Magnetic direction	RWY dimensions	Strength	TORA	TODA	ASDA	LDA
06	063°	1170 x 30	PCN 25/R/B/Y/U	1170	1230	1170	1170
24	243°	1170 x 30	PCN 25/R/B/Y/U	1170	1230	1170	1170



## Aeroklub Hořovice

Letiště Hořovice, 268 01 Hořovice,

☎ +420 775 780 035 (in operational hours of Providing information to known traffic unit),  
aeroklub.horovice@seznam.cz

Mgr. Karel Plzák (head of air traffic) ☎ +420 728 147 577  
Karel Studnička (deputy head of air traffic)

☎ +420 602 313 316

Bc. Martin Hrabák (deputy head of air traffic)

☎ +420 774 198 291

Luděk Dopirák (head of Aeroclub - only PARA operation)

☎ +420 777 150 035

Customs and immigration clearance: NIL

Threshold of RWY 06 shifted behind the road Tlustice - Hořovice. Threshold of RWY 24 is shifted as well.

Be very careful because of passing vehicles while crossing Tlustice - Hořovice road.



1 APR - 30 OCT  
SAT, SUN, HOL 0700-1600  
otherwise O/R



BA 95 Natural, aviation petrol - NIL



ELF 100 AD - limited volume



O/R, limited



NIL



aeroclub rest, 30 beds O/R, hotel "Zelený strom" - city Hořovice, distance 1,5 km



restaurant Tlustice, dist 1 km  
at the aerodrome - NIL



railway station ČD Hořovice, dist 1,2 km

