

LKUO Ústí nad Orlicí

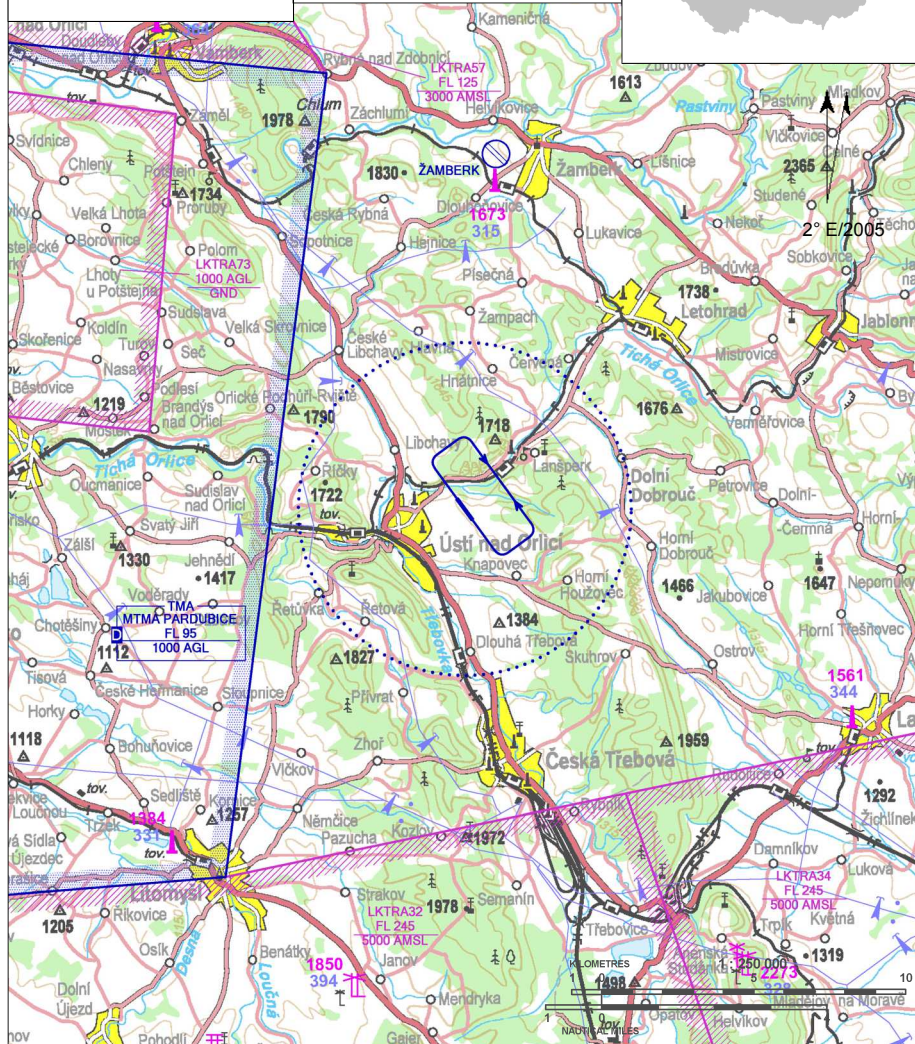
§ Public domestic aerodrome

✈ VFR day, parachute jumping operation



Ústí RADIO
122,210

ARP: 49° 58' 43" N, 16° 25' 35" E
2,5 km E from centre of
the town Ústí nad Orlicí
ELEV: 1342 ft / 409 m
Circuit: 2600 ft / 800 m AMSL



MTMA Pardubice is located 8 km W from the aerodrome.

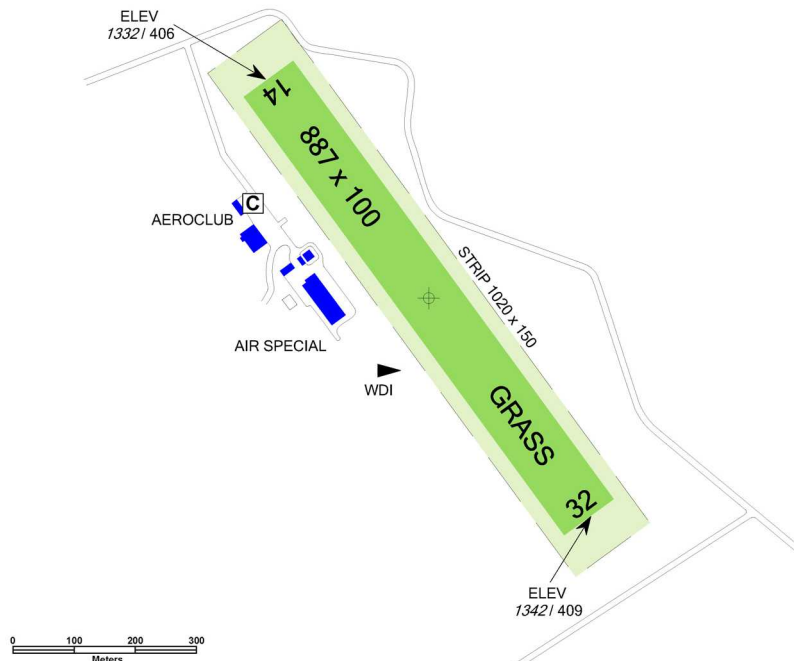
Avoid overflying of Ústí nad Orlicí and the neighbouring village Černovír below altitude 3000 ft/900 m.

LKUO Ústí nad Orlicí



Ústí RADIO
122,210

RWY	Magnetic direction	RWY dimensions	Strength	TORA	TODA	ASDA	LDA
32	323°	887 x 100	5700 kg / 0.4 MPa	887	920	887	887
14	143°	887 x 100	5700 kg / 0.4 MPa	887	920	887	887



15 APR-15 OCT
SAT, SUN, HOL 0600 - 1300
otherwise O/R

BL 95

AEROSHELL W100

limited O/R in Aeroclub or by firm AIR SPECIAL

O/R by firm AIR SPECIAL

Aeroclub MAX 4 persons - O/R, hotels in the town Ústí nad Orlicí - there is a possibility to book via firm AIR SPECIAL

there is a possibility of refreshment at the aeroclub in operational hours

taxi, rent car, bus 30 minuts, train 40 minuts by walk



Aeroklub Ústí nad Orlicí

letišťe, 562 06 Ústí nad Orlicí,

☎ +420 732 523 715 (in operational hours),
ak@lkuo.cz

Gustav Kareš - head of air traffic ☎ +420 602 294 179,
gkares@orbisavia.cz

MUDr. Jiří Cihlář ☎ +420 602 809 581, ak@lkuo.cz, EN

Ing. Miloš Mládek ☎ +420 605 354 070,
milos.mladek@tiscali.cz, EN, GER

Customs and immigration clearance: NIL



Air Navigation Services
of the Czech Republic